

Tips & Tricks

LinkOne Information Required When Changing Computers – LinkOne Publisher (Version 5)

This document is intended to assist users to move their LinkOne software to another computer, providing information on how to access the configuration, settings, licenses and other information from your old computer to transfer to your new LinkOne Publisher installation on a new computer.

LinkOne Publisher

There are some configuration areas that are to be migrated, such as licenses and graphic filter settings. Below is a list of each of these settings, and how to obtain this information from the current installation.

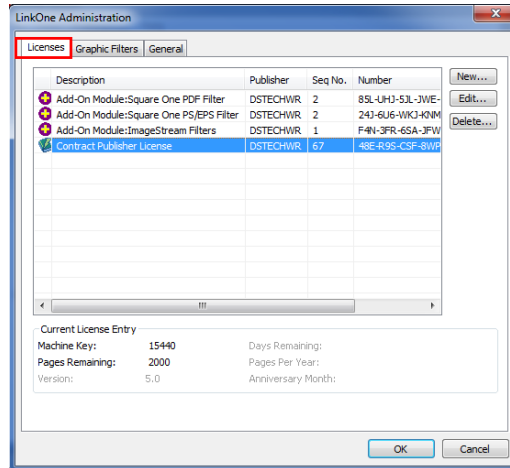
NOTE: When moving LinkOne Publisher to a new computer, a new machine key will be required to be generated and a new license number obtained from ABB before LinkOne Publisher can be used to build Release books (refer to Generating a Machine Key on the New Computer, page 5).

Steps to Migrate LinkOne Publisher

1. View the current license and record the pages remaining and the existing machine key (refer to Pages Remaining on Existing Publisher License, page 3).
2. Generate a machine key on the new computer (refer to Generating a Machine Key on the New Computer, page 5).
3. Advise DS TechWrite of the pages remaining, the old machine key and the new machine key.
4. ABB will provide DS TechWrite with a new publisher license number and a license cancellation form for the license on the old computer.
5. DS TechWrite will forward the new license number and the cancellation form to the Client.
6. The Client is to sign the license cancellation form and return it to DS TechWrite, who then forwards it to ABB as confirmation that the superseded license has been removed from the client's system.
7. The client installs the new license number on the new computer (refer to Setting Preferences on the New Computer, page 6).

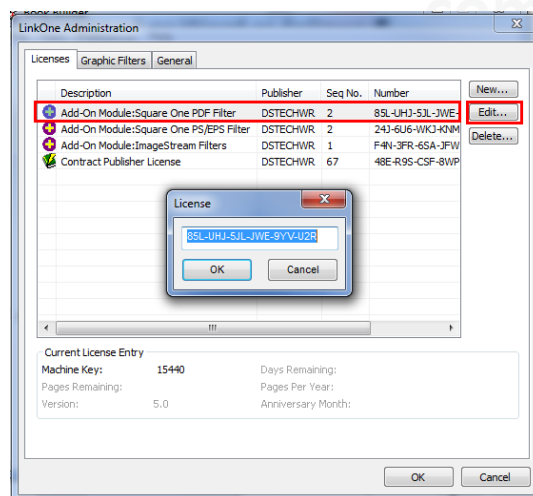
Licenses

The License tab includes both the installed publisher licenses and licenses for any filters that may be required to publish LinkOne books. Without these there may not have access to build and publish books.



The steps to review the Licenses settings and capture this information are shown below.

1. Open LinkOne Book Builder.
2. Go to Preferences > LinkOne Administration.
3. Take a screen capture of the Licenses tab and save for reference.
4. Record each license number in Notepad or Word as follows:
 - select a license,
 - click Edit to bring up the License entry box,
 - copy the license number and paste into Notepad or Word, and
 - save the Notepad or Word file.

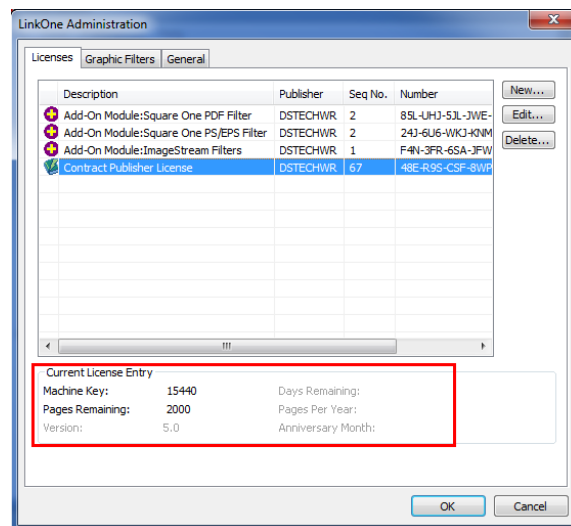


Pages Remaining on Existing Publisher License

ABB need to know the pages remaining on the existing license in order to issue a new license number for the new computer.

Locate the pages remaining as follows:

1. Open LinkOne Book Builder.
2. Go to Preferences > LinkOne Administration.
3. Go to the Licenses tab.
4. Click on the Publisher License.
5. Take a screen shot of the remaining pages and machine key.



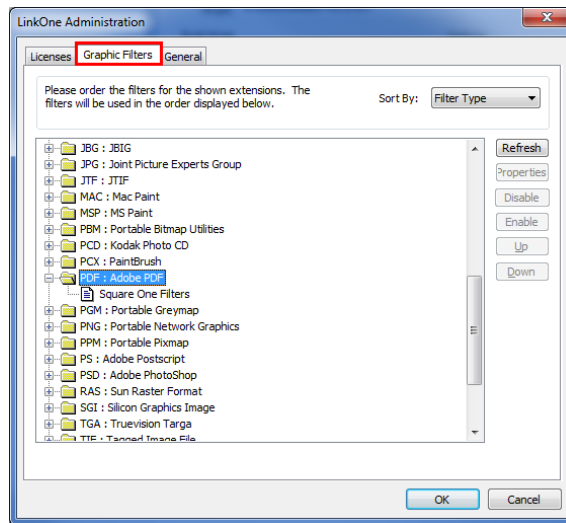
6. Save and forward to DS TechWrite with the new machine key (refer to Generating a Machine Key on the New Computer, page 5).

Graphic Filters

LinkOne Publisher has built-in graphic filters that ensure that the graphics are rendered correctly. These are listed under the Graphic Filters tab.

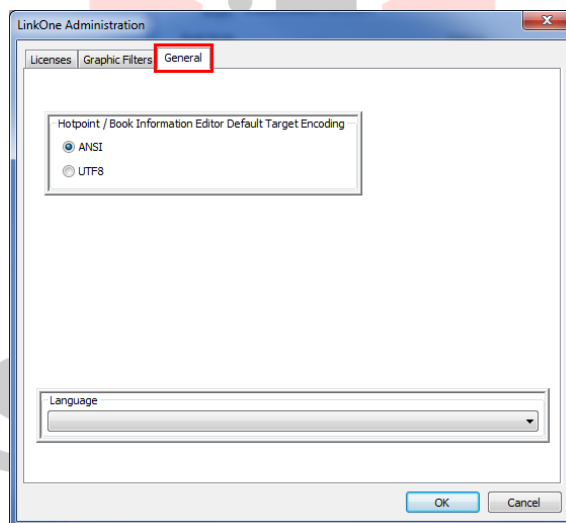
There are at times requirements for specific filters for special graphics. These require licenses to be issued by ABB and inserted into the Licenses tab before they will appear under the Graphic Filters tab.

If any other filters have been licensed (refer to the Licenses tab), check under the graphic format on the Graphic Filters tab and make a note if any filters are enabled and/or disabled.



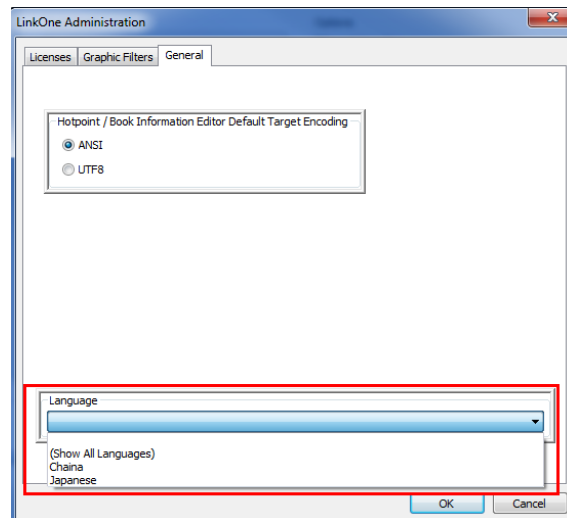
General

LinkOne Publisher Version 5.2 and above have enhancements which require the selection of the Hotpoint / Book Information Editor Default Target Encoding choice.



Go to the General tab and note which Target Encoding is used (ANSI is the default).

Check if the Language is set to other than blank and note.



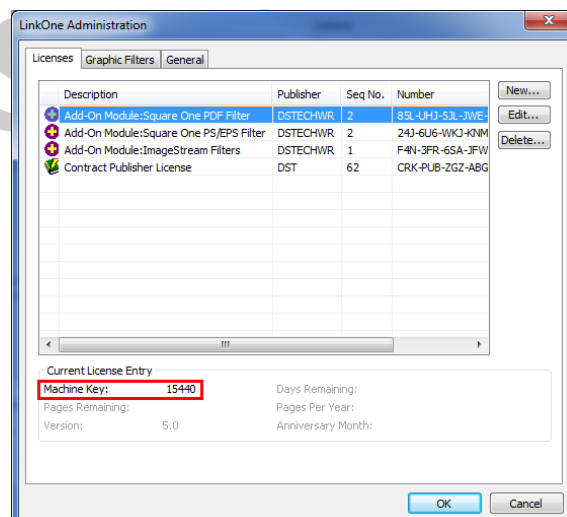
Generating a Machine Key on the New Computer

Each LinkOne Publisher license is machine-specific. Each license is registered with ABB using an auto-generated Machine Key.

The Machine Key is generated on the computer on the installation of LinkOne Publisher.

The steps to generate a new Machine Key are shown below.

1. Install LinkOne Publisher on the new machine.
2. Open LinkOne Book Builder.
3. Go to Preferences > LinkOne Administration.
4. The Machine Key is located at the bottom the Licenses tab.



5. Provide the new Machine Key to DS TechWrite who will obtain a new license number from ABB for the new computer.

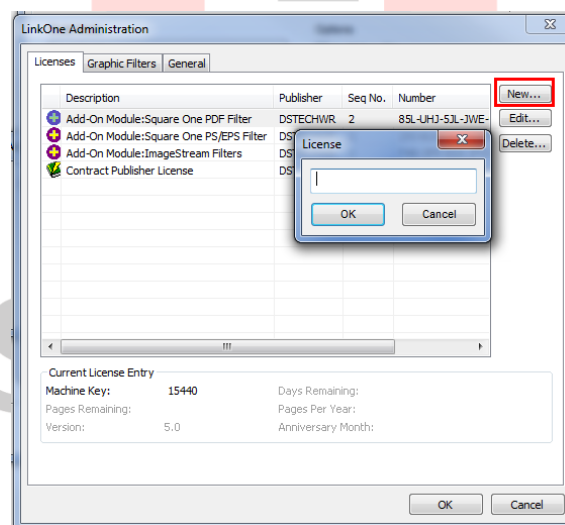
6. Once the new license has been received, install on the new computer as instructed in Setting Preferences on the New Computer, page 6.
7. Remove the superseded license from the old computer.
8. Sign the license cancellation form and return it to DS TechWrite, who then forwards it to ABB as confirmation that the superseded license has been removed from the client's system.

Setting Preferences on the New Computer

The licenses and other settings will need to be set on the new computer before LinkOne BookBuilder can be used.

The steps to install the new and existing licenses are shown below.

1. Open LinkOne Book Builder.
2. Go to Preferences > LinkOne.
3. Go to the Licenses tab, select the New button and paste the license number into the License entry box.
4. Repeat step 3 for each license.



5. Go to the Graphic Filters tab, enable / disable any Graphic Filters settings to match the previous computer's settings.
6. Go to the General tab and amend if required.